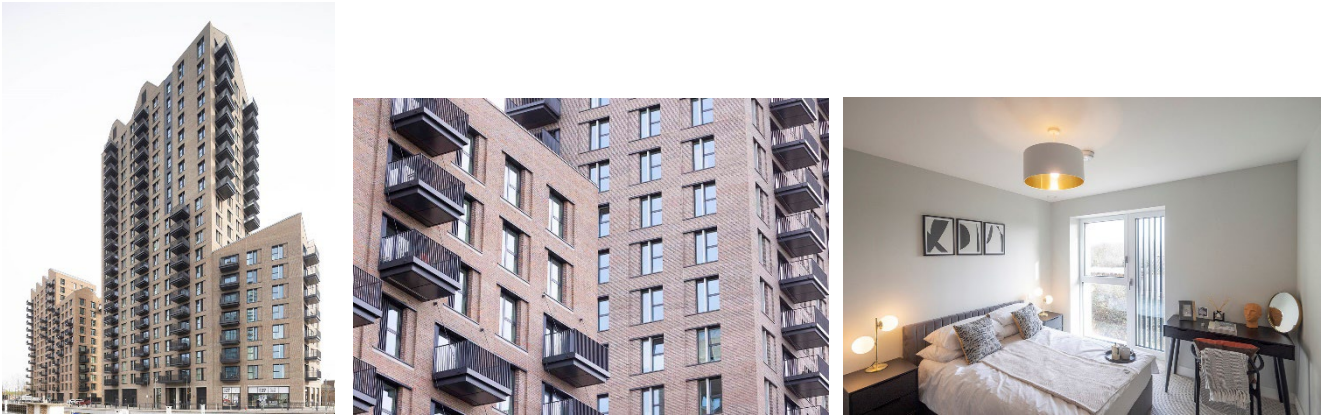


## PROJECT NEWS



## MAJOR REGENERATION IN THE HEART OF HALE WHARF

### VISION

Hale Wharf was highlighted as one of the Mayor of London's key housing developments. The project was designed to play a significant role in fulfilling the London Mayor's and the local Council's goal of building 2,000 new homes in Tottenham Hale, forming a residential-led, mixed-use development situated on the River Lee Navigation.

### TRANSFORMATION

Kawneer played its part in the impressive Hale Wharf regeneration project by supplying our AA<sup>®</sup>100 Curtain Wall System, known for its excellent thermal performance and flexibility of design choice. The system features on both the ground floor retail and communal entrances of the 21-Storey (Block A) and 15-Storey (Block B) Buildings. It also features our AA<sup>®</sup>190 TB Doors on Block B that excel in high-traffic environments due to its robust and welded construction. The one and two-bedroom apartments are also fitted with Kawneer's AA<sup>®</sup>720 Casement and AA<sup>®</sup>720 Tiltturn Windows and AA<sup>®</sup>3572 Lift/Slide Doors, giving residents access to their balconies and the far-reaching city views which help set this exceptional development apart.

### REALISATION

The project, designed by Allies and Morrison and built by Main Contractor McLaren Construction, was installed by our approved specialist subcontractor JPJ Installations. It provides Tottenham Hale with 249 stunning new homes, modern retail spaces, and canal-side public areas in a visually striking and complimentary design.

### ENDS

For further information, please contact:

Jane Ashley @ Kawneer

T 01928 502500

E [jane.ashley@arconic.com](mailto:jane.ashley@arconic.com)